



**11975 Portland Ave. S., Suite 104  
Burnsville, MN 55337**

**Phone: 952-894-6637**

**Fax: 952-894-0750**

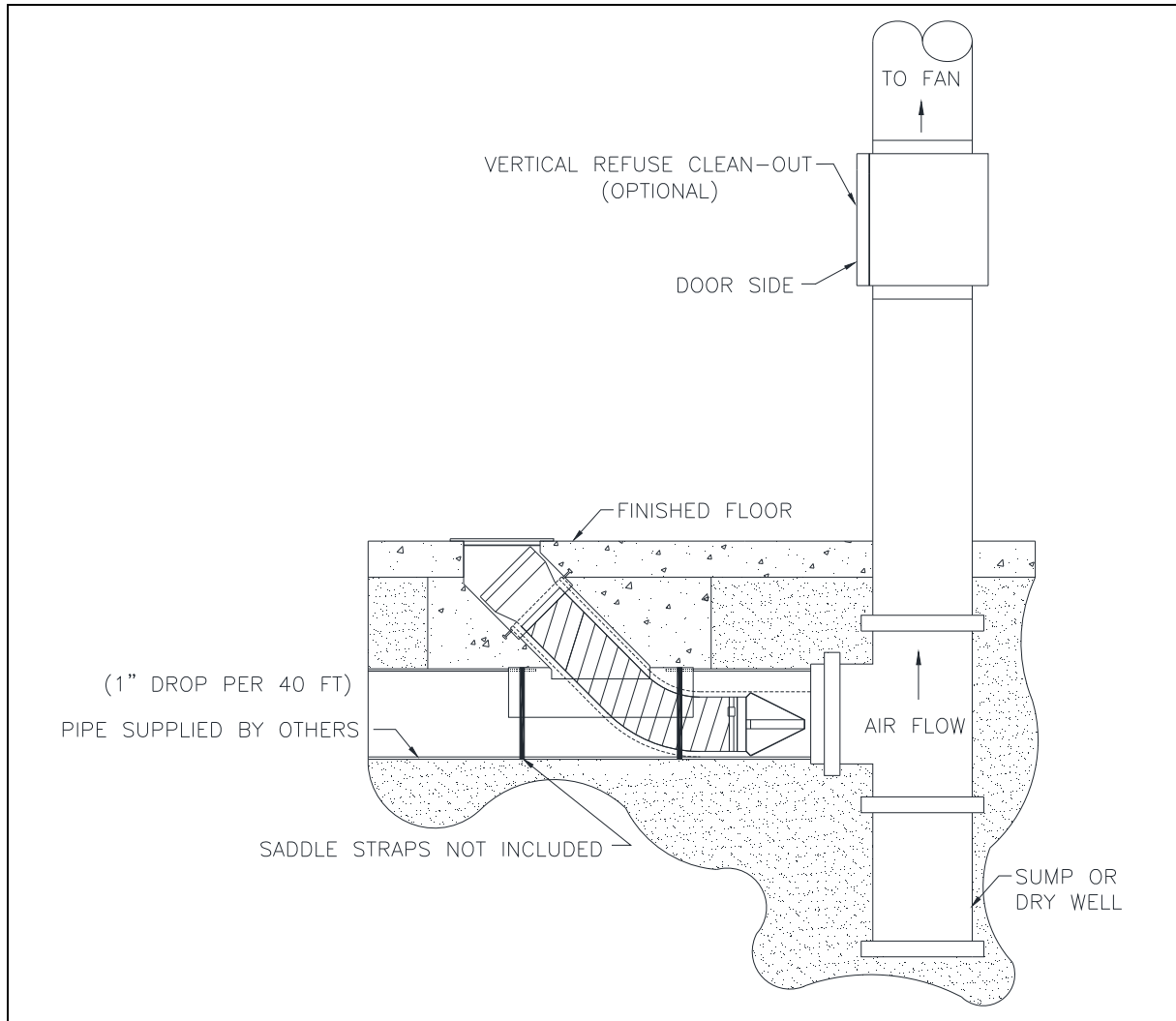
**Email: [info@ventaire.com](mailto:info@ventaire.com)**

**Website: [www.ventaire.com](http://www.ventaire.com)**

**PRODUCT GUIDE FOR**

**Underfloor Dual**

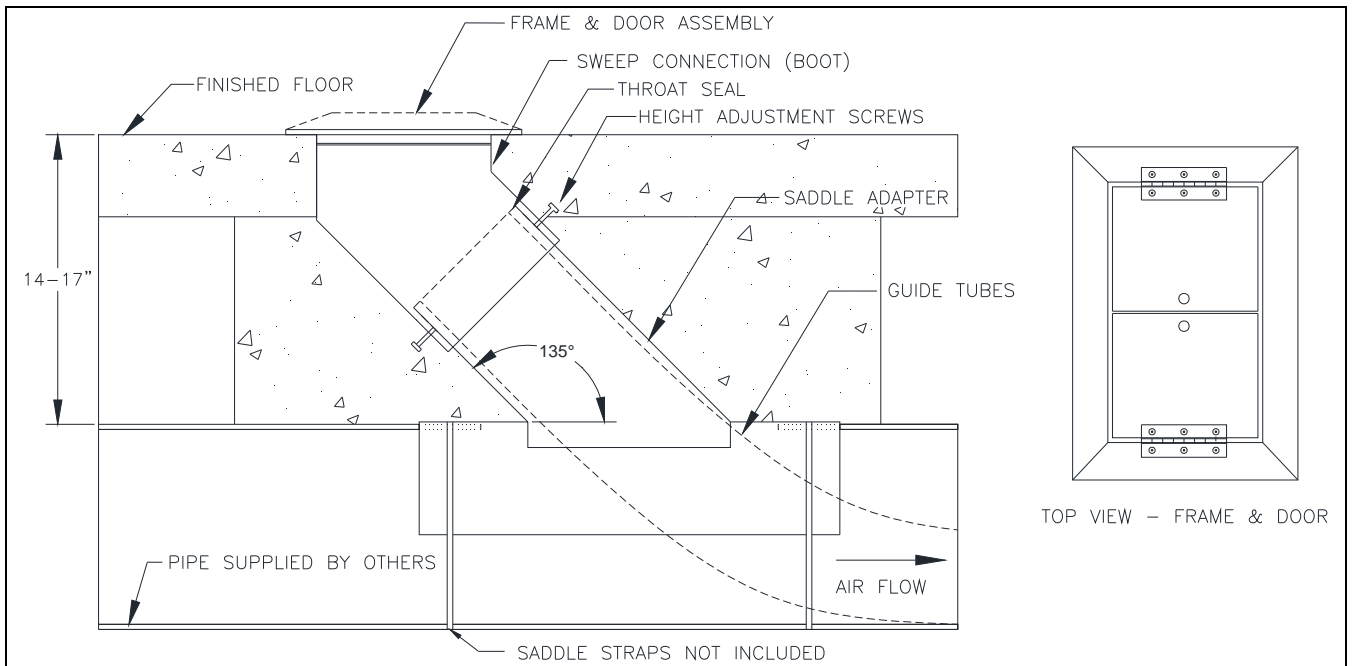
**Self Storing System**



**FIG 1**

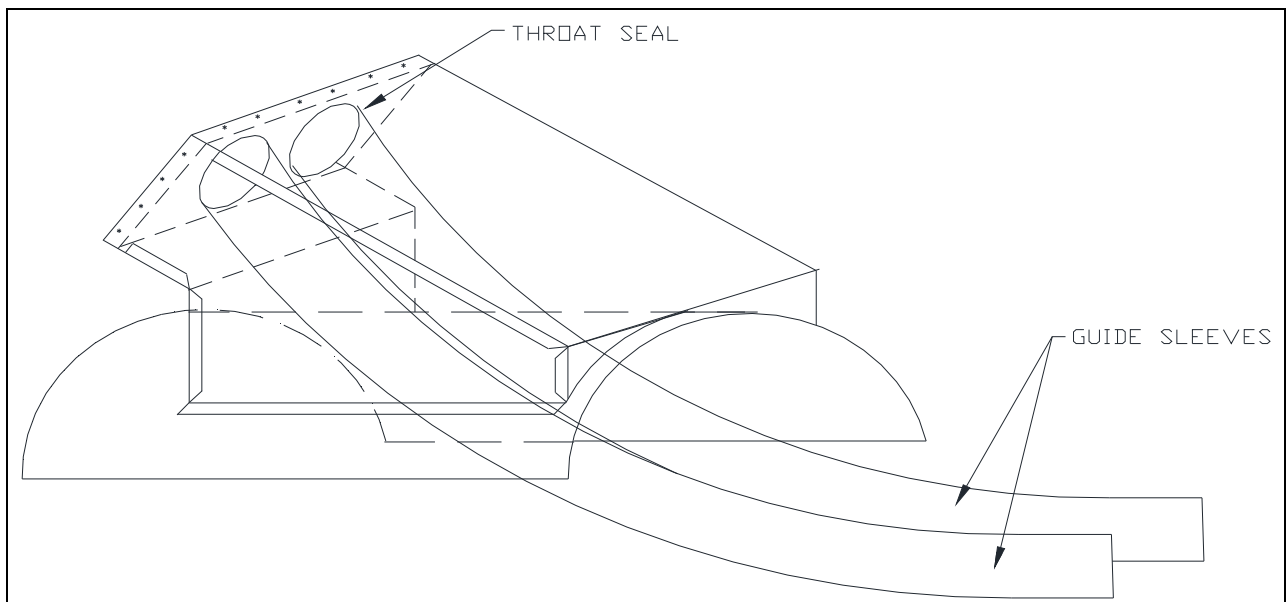
**INTRODUCTION**

1. Prior to installation inspect all the components received for shipping damage. If damage occurred contact your Ventaire representative for assistance.
2. Read **ALL** the instructions before proceeding with any installation, operation, or maintenance.



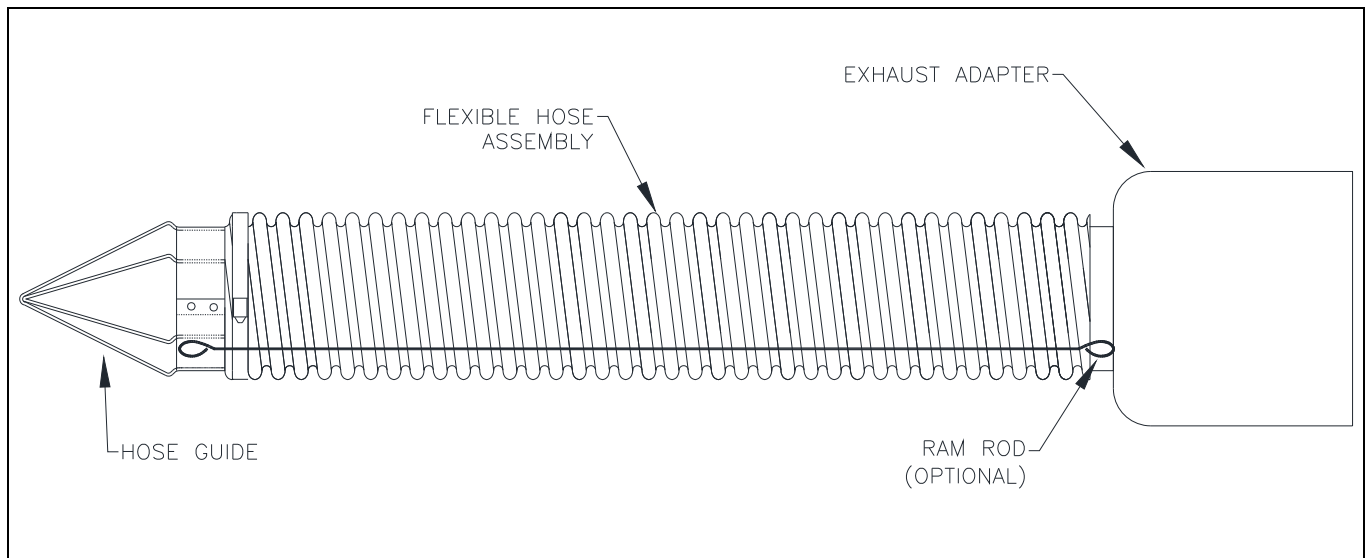
**FIG 2**

1. Dig the trench depth to allow between a minimum of 14" and a maximum of 17" above underground pipe. (See FIG 2).
2. Install the pipe in ground according to industry standards. The pipe should be pitched at least 1" for every 40' of pipe towards the fan and sump pump or dry well. The sump pump or dry well should be installed at the low end of the pipe.
3. Cut a hole in the pipe matching the opening on the saddle adapter. Consult the building plans for exact hole location. Please note that there is an offset from where the hole is cut in the pipe and where the floor fixture door will be positioned on the finished floor.



**FIG 3**

4. If the throat seal has not been fastened to the saddle, weld or rivet throat seal to saddle, assuring the fasteners do not interfere with the hose and boot. (See FIG 3).
5. Push the guide tubes, from the throat seal, down into the pipe opening. This will prevent hose assemblies from interfering with each other while guiding the hoses under the floor. Apply Duct Sealant around the opening. Center the saddle over the hole and fasten to the pipe using saddle straps. (Not Provided) Be certain the saddle is inclined in the proper direction to ensure proper airflow. (See FIG 1)
6. Backfill around the pipe but leave the saddle area exposed. This area will eventually be filled with concrete.
7. Place the boot and door assembly over the saddle adapter. Set the fixture to the proper height and position using wooden stakes for support. Height adjustment screws (squash nuts) are included; tighten them securely at this time.
8. To ensure that no concrete enters the system, apply sealant to any apparent gaps between the saddle and the boot.
9. Pour the floor making certain that the area around the saddle and fixture is completely filled in.



**FIG 4**

10. Assemble the self storing hose assembly as shown in FIG 4.
11. Fasten the hose guide to the flexible hose using the provided hose clamp. To ensure a rigid connection is established, drill and rivet the connections through the hose clamps.
12. Fasten the exhaust adapter to the other end of the flexible hose using the provided hose clamp. To ensure a rigid connection is established, drill and rivet the connections through the hose clamps.

13. If an optional ram rod is supplied, place the ram rod inside the hose and attach the ends to the sleeves of the hose guide and the tailpipe adapter.
14. Insert the hose assembly into the floor fixture to ensure the hose assembly can be completely concealed in the underground duct (See FIG 1).

### **For Systems with VRCO (Vertical Refuse Clean-Out)**

1. Determine an accessible location for VRCO.
2. Cut the duct from the floor to the desired height.
3. Connect the duct from the floor to the bottom of the VRCO using appropriate fasteners. (Not Included)
4. Connect the duct from the top of the VRCO to the fan using the appropriate fasteners. (Not Included)
5. Turn on the fan to test for leaks.

### **OPERATION**

Complete operation of the Ventaire floor fixture is simple and can be done in a few easy steps.

1. When not in use, hose assemblies should be completely contained under the floor. The exhaust adapter should be positioned just below the floor height so that the door can be closed.
2. To use the system, open the floor fixture door and extend the hose from the floor fixture to the desired location. **NOTE:** Make sure the hose assembly is not pulled entirely out of the fixture.
3. Always use care when withdrawing and inserting the flexible hose set to avoid damaging the hose assembly and connections.
4. Attach the exhaust adapter to the vehicle exhaust tailpipe.
5. Turn on the exhaust fan.

### **When finished, simply:**

1. Turn off the exhaust fan.
2. Return the hose assembly to the floor fixture and close the fixture door.

**NOTE:** If your system was supplied with fabric flexible hose that is supported with a spring steel helix. It will not retain the proper shape if crushed. Care must be taken not to step on or drive over flexible hose.

## **MAINTENANCE**

1. Routinely check the exhaust hose for excessive wear. Replace if necessary.
2. Periodically check all the connections between the hose, hose guide & exhaust adapter. Tighten if necessary.
3. Periodically check the floor fixture opening and hinges to ensure proper working order is maintained. Also, keep the floor fixture free from any obstructions. Clean out or adjust as necessary.
4. Exhaust fan maintenance: see the instructions provided by the manufacturer.



Phone: (952) 894-6637

Fax: (952) 894-0750

Email: [info@ventaire.com](mailto:info@ventaire.com)

## 12-MONTH WARRANTY

---

**VENTAIRE** warrants their products, to the original purchaser, to be free from defects in material and workmanship under normal use and service (except for those cases which buyer supplied materials are used) for a period of 12 months from the original date of shipment. During the warranty period, **VENTAIRE**, will at its option, repair, replace, or issue credit for any components that are deemed defective by **VENTAIRE**.

Buyer's failure to pay the full amount due within (60) days of invoice shall release seller from any and all liability or obligation to any warranty.

Before returning equipment for repair or replacement, a **Return Authorization Number** must be obtained from **VENTAIRE** (952-894-6637). The **Return Authorization Number** must be written on the outside of all shipping cartons. Items returned without a **Return Authorization Number** will be refused. Items returned should be in original condition in which it was received and must be accompanied with a written explanation of the reason(s) for their return.

This warranty does **not** cover damage caused by accident, misuse, misapplication, or unauthorized service modification.