



**11975 Portland Ave. S. Suite 104  
Burnsville, MN 55337**

**Phone: 952-894-6637**

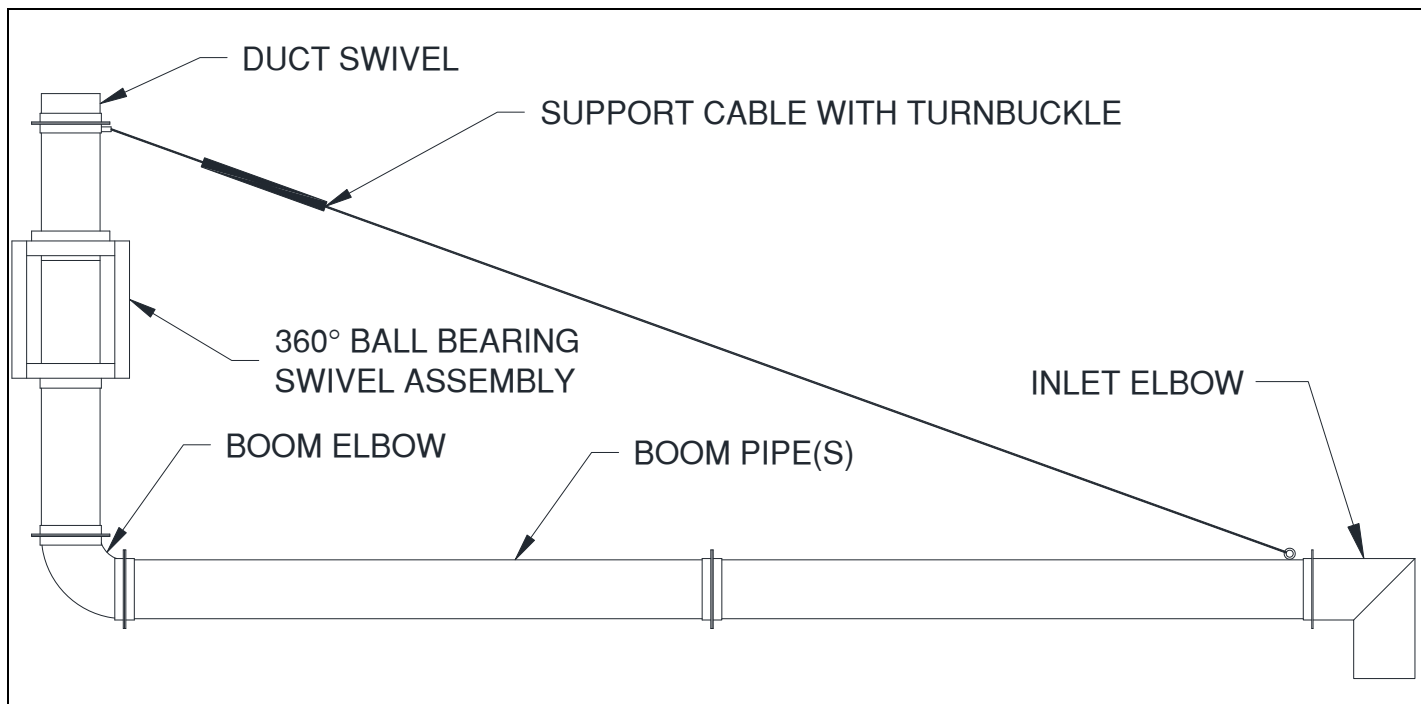
**Fax: 952-894-0750**

**Email: [info@ventaire.com](mailto:info@ventaire.com)**

**Website: [www.ventaire.com](http://www.ventaire.com)**

## **PRODUCT GUIDE FOR**

# **Model RB-Rotoboom with Vehicle Exhaust Hose Drop & ACR – Cable Reel Lifting Device**



**FIG 1 – Boom Detail**

## **INTRODUCTION**

1. Prior to installation inspect all of the components received for shipping damage. If damage occurred contact your Ventaire representative for assistance.
2. Read **ALL** the instructions before proceeding with any installation, operation, or maintenance.

## **ROTOBOOM INSTALLATION**

1. Layout the boom sections similar to FIG1 making sure the duct swivel is orientated up.
2. Using a forklift or other lifting device, mount the swivel housing to the wall or other rigid structure using fasteners (not provided) through the mounting holes.

*NOTE: To insure proper operation of the boom, it is important to mount the swivel level, and use all the provided mounting holes.*

3. Attach the flanged boom elbow to the bottom of the swivel with the included hardware.

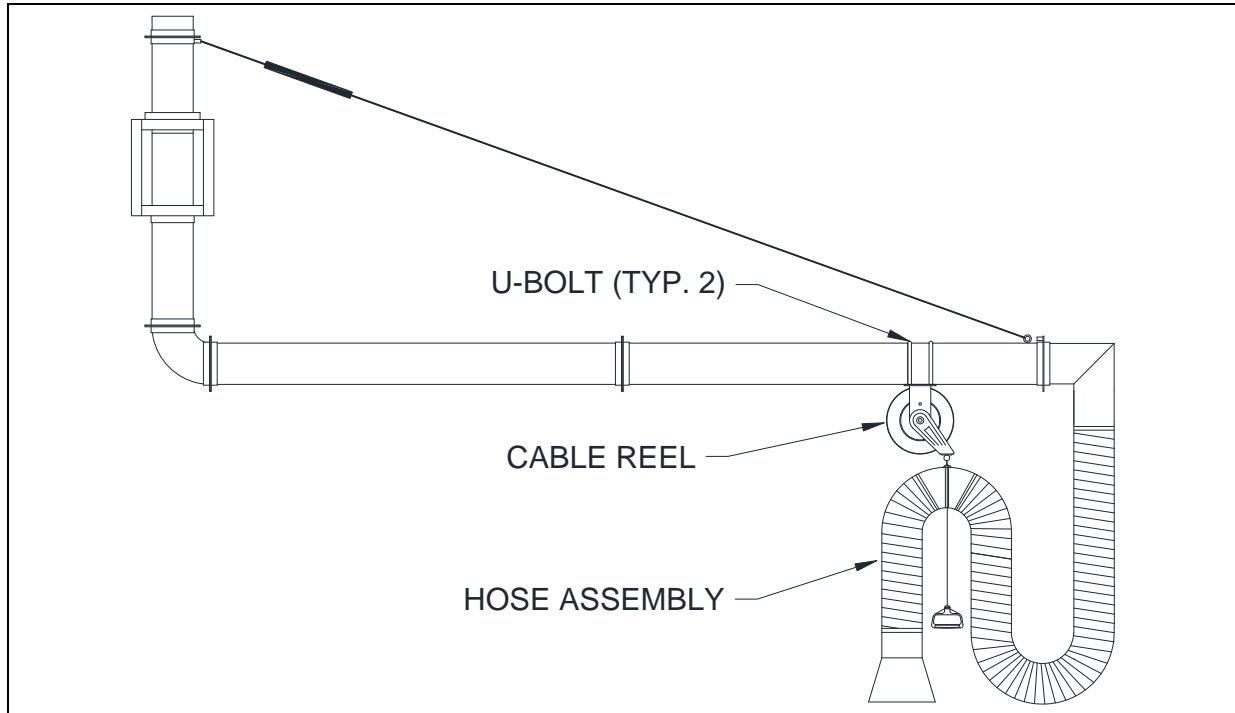
*NOTE: Be sure to mount the elbow so that the leg out is in-line with the eyebolt on the top of the swivel housing.*

4. Using a forklift or other lifting device, mount the boom pipe(s) to the boom elbow. (The eyebolt should be located at the opposite end of the swivel housing.) Attach the end of the guy wire to the eyebolt located at the end of the boom. Attach the opposite end of the boom to the elbow with the provided hardware. Adjust the tension in the guy wire such that the far end of the boom is horizontal with the floor (or slightly above).

*NOTE: It is very important that the guy wire is adjusted properly to insure safe operation of boom.*

5. Attach rigid duct to the top of swivel housing using standard industry methods.
6. Attach the inlet elbow to the end of the boom.

*NOTE: In some cases, attaching a rope, cable or chain to the end of the boom may aid the user in the rotation of the boom.*



**FIG 2 – Rotoboom With Cable Reel & Hose Assembly**

### **HOSE ASSEMBLY INSTALLATION**

1. Assemble the flexible hose and all the hose accessories according to the system's design.
2. Attach the flexible hose assembly to the inlet elbow located at the end of the boom with the provided hose clamps. (See FIG 2)

*NOTE: To ensure connection, rivet the flexible hose through the hose clamp to the rigid duct.*

*NOTE: Be sure to readjust the guy wire such that the boom is completely level after the hose assembly and any applicable lifting device has been installed.*

## **CABLE REEL INSTALLATION**

1. With the U-bolts provided, mount the cable reel to the boom, using the (4) mounting holes. (See FIG 2)
2. Be sure to readjust the guy wire such that the boom is completely level after the hose assembly and any applicable lifting device has been installed.

*NOTE: Tension Adjustment: The ACR series cable reel is fully adjustable. The tension on the reel can be easily increased or decreased to suit your specific needs.*

***CAUTION: Excessive spring tension can cause damage to the reel and/ or hose assembly. The reel tension should be adjusted so that the flexible hose assembly slowly retracts completely to the reel when not in use.***

3. Attach the cable, which is fastened to the ACR, to the flexible hose assembly at lifting saddle, lifting elbow or directly to the adapter (in lifting elbow or saddle not provided) using the cable clamps provided. (See FIG 2)
4. After hose assembly is attached to the reel, determine if the tension is adjusted correctly. If the cable does not pull the hose up when the latch is released, increase tension. If the hose retracts too quickly, decrease the tension.
5. Pull out 3-6 feet of cable and secure ratchet latch.
6. To add tension, bring the cable back through the guide arm and add a wrap around the reel drum. Adding one loop at a time, continue until the desired tension is achieved.
7. To decrease tension, bring enough cable back through the guide arm to remove a loop from the reel drum. Removing one loop at a time, continue until the optimum tension is achieved.

***WARNING: Use extreme caution; reel under tension. Avoid releasing latch mechanism.***

8. All mating parts are to be lubricated with Perma Bond or Loctite anti-seize. The following parts should be inspected routinely. The cable itself should be visually inspected for any wear or fraying which may result in personal injury and/ or equipment damage. All bolts should also be inspected to ensure that the reel and all components are securely tightened. Do not attempt to perform any service other than the above. All other services should be performed by Ventaire. Failure to do so can result in personal injury and/or equipment damage and may void warranty.
9. For problems not covered in these situations contact your Ventaire representative.

## **OPERATION**

1. Position the extension boom to allow the exhaust adapter on the end of the boom to get as close to the fume source as possible without interfering with the work.
2. To extend hose, firmly grasp the handle and pull down until hose is at the desired length and the locking mechanism engages.

3. Attach the tailpipe adapter to the source of fumes being exhausted.
4. To retract the hose, firmly grasp the handle and slightly pull until the locking mechanism disengages. The cable reel will then begin retracting the hose.

**WARNING: The flexible hose assembly and/or reel may be damaged if optimal reel tension is exceeded. The reel should be adjusted so that there is enough force to slowly pull up the hose to the desired height.**

### **MAINTENANCE**

1. Routinely check the flexible hose for wear to ensure proper airflow. Replace if necessary.
2. Periodically check all of the cables for fraying and excessive wear. Closely inspect all the connections. If wear or fraying exists replace the cable and/or connectors.
3. Routinely check all the nuts, bolts, and connection hardware. Tighten or replace if necessary.
4. For the exhaust fan use the instructions provided by the manufacturer.
5. Lubricate the ball bearing swivel joints every 12 months or as necessary. Apply lubrication grease directly to the ball bearings.
6. The rigid duct requires no maintenance.
7. For problems not covered in these situations please contact your Ventaire representative.



Phone: (952) 894-6637

Fax: (952) 894-0750

Email: [info@ventaire.com](mailto:info@ventaire.com)

## 12-MONTH WARRANTY

---

**VENTAIRE** warrants their products, to the original purchaser, to be free from defects in material and workmanship under normal use and service (except for those cases which buyer supplied materials are used) for a period of 12 months from the original date of shipment. During the warranty period, **VENTAIRE**, will at its option, repair, replace, or issue credit for any components that are deemed defective by **VENTAIRE**.

Buyer's failure to pay the full amount due within (60) days of invoice shall release seller from any and all liability or obligation to any warranty.

Before returning equipment for repair or replacement, a **Return Authorization Number** must be obtained from **VENTAIRE** (952-894-6637). The **Return Authorization Number** must be written on the outside of all shipping cartons. Items returned without a **Return Authorization Number** will be refused. Items returned should be in original condition in which it was received and must be accompanied with a written explanation of the reason(s) for their return.

This warranty does **not** cover damage caused by accident, misuse, misapplication, or unauthorized service modification.