



**11975 Portland Ave. S. Suite 104
Burnsville, MN 55337**

Phone: 952-894-6637

Fax: 952-894-0750

Email: info@ventaire.com

Website: www.ventaire.com

PRODUCT GUIDE

FOR PORT700PF –

Portable Fume Collector

General Safety Information

MACHINE WARNING SIGNS

DANGER


Indicates an imminently hazardous situation which, if not avoided, will result in death or serious injury.

WARNING

Indicates a potentially hazardous situation which, if not avoided, could result in death or serious injury.

CAUTION

Indicates a potentially hazardous situation which, if not avoided, may result in minor or moderate injury.

Used without the safety alert symbol () indicates potentially hazardous situation which, if not avoided, may result in property damage.



Warning of electric shock



Do not expose the equipment to rain or use in damp locations.



Do not use the equipment around flammable products, if not avoided, sparks can ignite vapors from flammable products. Read and understand all warnings and operating instructions before using this equipment. Failure to follow all instructions may result in electric shock, fire, and/or serious personal injury or property damage.



TABLE OF CONTENTS

MACHINE WARNING SIGNS	2
Specifications	4
ADDITIONAL WELDING FUME EXTRACTOR SAFETY RULES	5
Assembly	7
Installation	7
ELECTRICAL INSTALLATION	7
Operation	8
Function Explanation	9
Repair Parts Illustration	10
Repair Parts List	11
Warranty	13

Specifications

Motor	1.5 HP
Air Volume (C.F.M.)	700 CFM from hood
Inlet Size	Ø 6"
Packing Size (L x W x H)	43" x 30" x 44"
Net Weight	309 lbs
Gross Weight	375 lbs

General Safety Information

(Continued)



Use this product carefully to effectively avoid any possible danger. Observe the following safety regulations to avoid bodily injury due to electrocution during use.

Read this Manual carefully before operating the product and preserve the Operation Manual properly.

1. Keep work area clean and organized.
 - A disorderly working environment will cause inconvenience and danger during operation.
2. Check if the working environment is suitable for using the product.
 - Do not use the product in a humid environment.
 - Use the product in a good working environment to reduce risks.
 - Do not use the product in a flammable gas or liquid environment to avoid danger.
3. Keep other persons away from the product, except for the operator, to avoid danger.
 - Do not let children get close to the product. All wires used by the product shall be in a safe location to prevent children from touching them.
4. All tools shall be safely stored.
 - When the tools are not used, please store them in a dry place safely beyond the reach and access of children.
5. If the machine breaks down, contact a

service technician. Do not attempt to repair and possibly damage the machine.

6. When using the product, be sure to put on a welding suit and mask.
7. Use the electrical wires correctly.
 - During use, do not drag the electrical wires forcefully. Do not use these wires if fraying or current leakage occurs to avoid injury to the operator.
8. Before replacing parts, shut off power to the machine.
 - Check that the switch is in "on" or "off" position. Do not attempt the replacement when the machine is running. To replace parts or filter material, make certain that the switch is "off".
9. Use the power cord correctly. The total length of power cord shall not exceed 10 feet to avoid low power due to a drop in voltage and to prevent a possible hazard.



When connecting the product, always follow the instructions in the Operation Manual to avoid injuries.

10. Care and Maintenance:
 - Confirm that the parts/accessories have been fully assembled and will not adversely affect the machine operation.
 - Check if the machine is operated properly.
 - Replace damaged parts or accessories according to the instructions of the Manual. If the said instructions are not specified in the Manual, have a professional technician carry out the maintenance or replacement.
 - Check that the electrical specifications

of this machine meet safety requirements, and that the maintenance is carried out by a professional technician. Use original manufacturer's parts and accessories to avoid injury.

- If a problem occurs, contact your dealer immediately.

ADDITIONAL WELDING FUME EXTRACTOR SAFETY RULES

The Welding Fume Extractor can be dangerous if it is operated incorrectly.

Therefore, the product must be used cautiously to avoid causing a hazard or damage. Unnecessary injuries may occur by failing to follow the instructions of the Safety Rules Manual. Be sure to put on protection equipment or suit that can protect your body, such as helmet and eye mask to avoid injuries from occurring. If any doubts or any unfitness occurs during use, be sure to stop the operation immediately. Keep in mind that the user shall be liable for using according to the specified safety rules and for operating the machine correctly.

1. Read this Manual carefully before operating the product.
2. Be sure to follow local electrical and safety regulations and observe the electrical safety standards practiced in the relevant area. All electrical wire connections and installation shall be carried out by a professional technician.
3. Do not operate the product near flammable materials, as sparks may ignite these materials and cause an explosion. Please confirm there aren't any flammables near the working site to

avoid hazard.

4. This product is suitable for collecting smoke and welding oil gas. Do not use it in collecting iron chips and dust at the same time to avoid producing sparks.
5. Before replacement of parts or filter materials, be certain that the switch is disconnected.
6. Do not kink the power cord and keep it away from oil, chemicals or flammables.
7. Check that the voltage, phase count and grounding wire match the machine requirements.
8. When the fan blades are operated at high speed, do not reach hand near these blades to prevent finger from breaking or clothes/necktie from getting caught. Do not put the hand or foreign matter into the air inlet to avoid getting caught in the high-speed rotation of fan blades.
9. When not in use, all air inlets of Welding Smoke Treatment Machine shall be covered.

Assembly

Do not connect the Welding Smoke Treatment Machine before the assembly is finished and you have read and understood all of the precautions stated in the Manual.

NOTE: For correct assembly, refer to the Illustrations and Parts List on pages 10-11.

Installation

MOVING AND TRANSPORTATION

The net weight of this machine is about 309 lbs. It CANNOT be handled and transported without the help of lifting tools. For your safety, read all instructions carefully.

Do not move without the help of others to avoid causing danger.

ELECTRICAL INSTALLATION

POWER CONNECTION

1. Confirm that the power is properly connected under normal power supply condition. It is recommended to provide manual shutdown device before connecting power.
2. It is recommended to protect the control equipment with suitable grade of fuse, and the length of fuse and power cord shall not be over 10 feet.

SHUTDOWN

1. Disconnect power by manual method.
2. When stopping operation, check if the switch is under off status.

EARTHING WIRE

Connect yellow/green wires to the earthing wire power jack. Confirm that the earthing wire has been properly connected before connecting main power cord to the machine at all times.

⚠ WARNING

Do not disconnect the wiring jack

before cutting off power! Do not disconnect the wiring jack before cutting off power!

POWER INSTALLATION AND STORAGE

The electrical power is configured as following. If conditions are beyond the scope stated below, then it is required to ensure that the power is well arranged and safe.

- Ambient temperature: Between 41°F and 131°F. If the time is over 24 hours, then the ambient average temperature shall not be over 122°F.
- Humidity: Between 30% and 95%
- Altitude: 3,280 feet
- Moving and Storing: -13°F to 131°F. For short-time storage (less than 24 hours), the storage temperature can be up to 158°F.

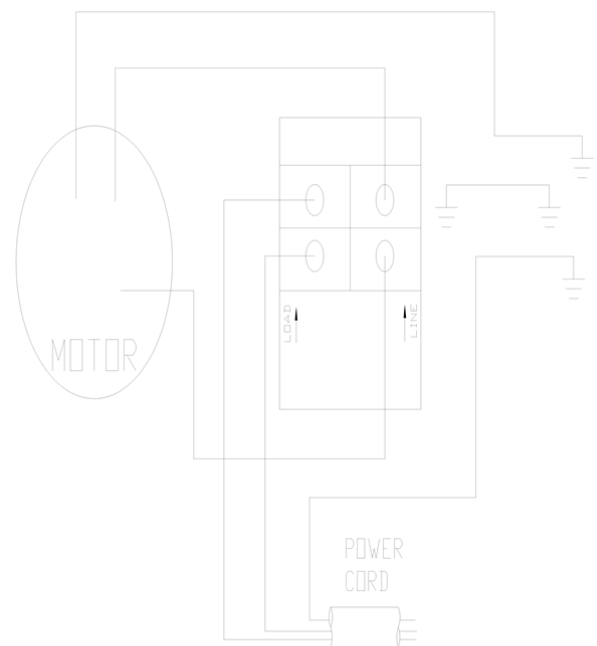


Figure 2 – Electrical Circuit Diagram

Operation

PRIOR TO START UP

Purpose: The Welding Fume Extractor is especially suitable for treating the smoke generated during ordinary welding processing work, which can effectively collect and screen the smoke resulting from the welding work in maintaining the air quality of the working environment.

- Before starting the machine, be sure to read this Manual carefully.
- Before starting the machine, check if relevant safety protection measures have been taken according to the Manual.
- Before starting the machine, watch the motor turning direction according to the instruction of arrow direction.

START UP

1. To ensure satisfactory performance for the Welding Smoke Treatment Machine, please confirm the air volume, power and the matching table of the Welding Smoke Treatment Machine.
2. Connect power according to electrical installation procedure after installing the Welding Smoke Treatment Machine and the table. Disconnect power according to electrical installation procedure when the machine is not used.
3. The Welding Smoke Treatment Machine shall be turned on and off by pushing I/O button. Under normal operation status,

use such I/O button.

OPERATION

1. Attach compressed air to the unit for cleaning purposes, at a source pressure of 90 PSI.
2. Refer to control panel (above) for initiating power to the motor and subsequent vacuum from the unit.
3. The vacuum hood should be placed an approximate distance of 12" from the smoke source for efficient operation.
4. If a decrease in vacuum is noted during operation and/or pressure exceeds 4" WIC on the pressure gauge, power down the machine, remove the metal filter, clean with water and then re-install.
5. If vacuum continues to be too weak for proper fume extraction, after cleaning the metal filter, contact AVANI for filter replacement. (see contact list in this manual)

Unpacking

The machine should be unpacked carefully. Check if the machine and components are consistent with those indicated in the Parts List. If any doubt arises or when the components are incomplete, contact AVANI.

Repair Parts Illustration

Please provide following information:

- Model number
- Serial number (if any)
- Part description and number as shown in parts list

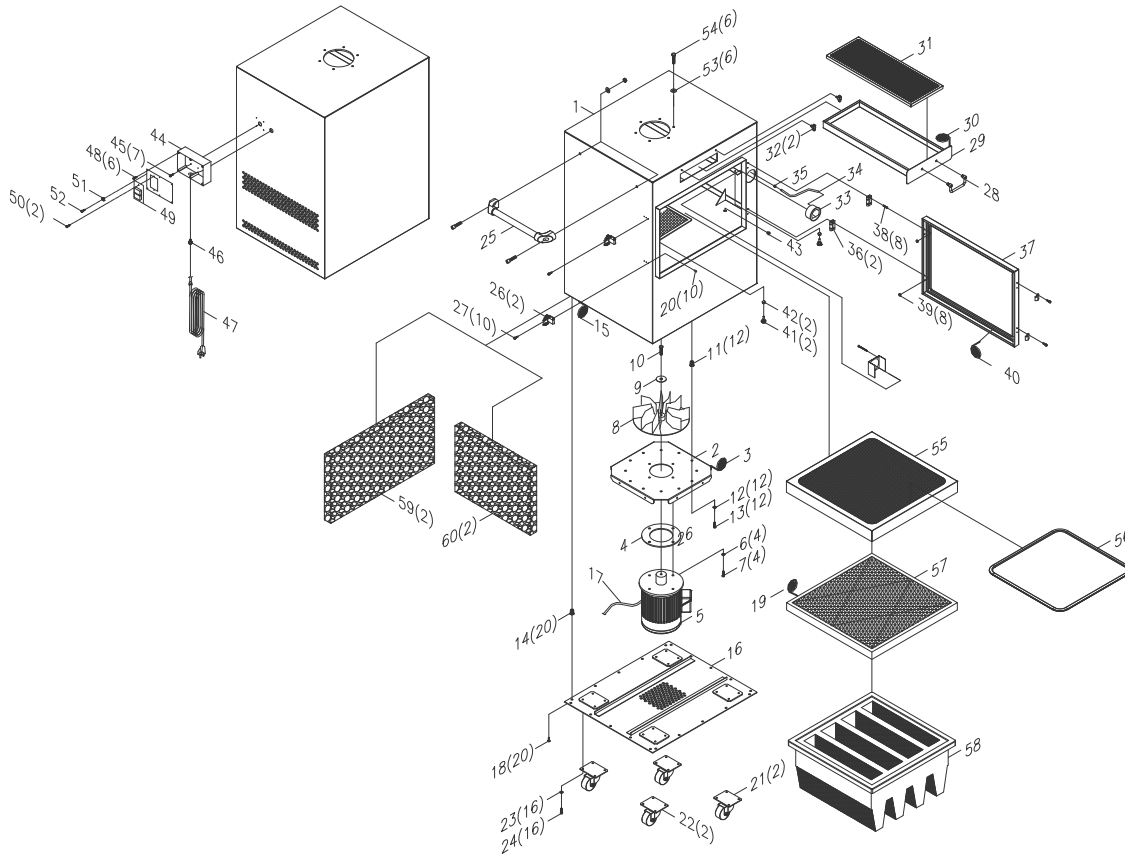


Figure 3

Repair Parts List

Repair Parts List for Welding Fume Extractor

Reference Number	Description	Part Number	Quantity
1	Machine Frame	2100G-1	1
2	Motor Base	2100G-2	1
3	Foam Tape	2100G-3	1
4	Motor Gasket	2100G-4	1
5	Motor (1.5HP)	2100G-5	1
6	Hex Screw (5/16"x1")	2100G-6	4
7	Hex Nut (5/16"xOD23x2t)	2100G-7	4
8	Impeller (11.5")	2100G-8	1
9	Flat Washer (5/16"xOD30x3t)	2100G-9	1
10	Hex Screw (5/16"x1")	2100G-10	1
11	Rivet (5/16")	2100G-11	12
12	Flat Washer (5/16"xOD23x2t)	2100G-12	12
13	Hex Screw (5/16"x3/4")	2100G-13	12
14	Rivet (5/16")	2100G-14	20
15	Foam Tape	2100G-15	1
16	Machine Bottom Cover	2100G-16	1
17	Line Cord (short)	2100G-17	1
18	Hex Screw (5/16"x3/4")	2100G-18	20
19	Foam Tape	2100G-19	1
20	Plastic Cover	2100G-20	10
21	Casters	2100G-21	2
22	Casters	2100G-22	2
23	Flat Washer (5/16"xOD18x2t)	2100G-23	16
24	Hex Screw (5/16"x3/4")	2100G-24	16
25	Aluminum Handle	2100G-25	1
26	Spring Duo Buckle	2100G-26	2
27	Phillips Head Sheet Metal Screw	2100G-27	10
28	Handle Set for Drawer	2100G-28	2
29	Drawer	2100G-28	1
30	Foam Tape	2100G-30	1
31	Drawer Net	2100G-31	1
32	Special Screw (5/16"x3/4")	2100G-32	2

Reference Number	Description	Part Number	Quantity
33	Manometer	2100G-33	1
34	Tubing	2100G-34	1
35	Hose Connector	2100G-35	1
36	Hinge	2100G-36	2
37	Door (Frame)	2100G-37	1
38	Inner Hex Screw (M5x12)	2100G-38	8
39	Hex Nut (M5)	2100G-39	8
40	Foam Tape	2100G-40	1
41	Wheel Head Screw (1/4"x3/4")	2100G-41	2
42	Screw Cap (1/4")	2100G-42	2
43	Strain Relief	2100G-43	2
44	Switch Box	2100G-44	1
45	Phillips Head Sheet Metal Screw	2100G-45	7
46	Strain Relief	2100G-46	1
47	Line Cord (long)	2100G-47	1
48	Phillips Head Sheet Metal Screw	2100G-48	6
49	Control Panel	2100G-49	1
50	Special Copper Screw (6#32x1/4)	2100G-50	2
51	Special Copper Screw (6#32x1/4)	2100G-51	1
52	Gear Shape Washer	2100G-52	1
53	Hex Screw (5/16"x3/4")	2100G-53	6
54	Flat Washer (5/16"xOD23x2t)	2100G-54	6
55	Stainless Net	2100G-55	1
56	Seal	2100G-56	1
57	Pleated Prefilter	2100G-57	1
58	95% ASHRAE Filter	2100G-58	1
59	Noise Reducer	2100G-59	2
60	Noise Reducer	2100G-60	2



Phone: (952) 894-6637

Fax: (952) 894-0750

Email: info@ventaire.com

12-MONTH WARRANTY

VENTAIRE warrants their products, to the original purchaser, to be free from defects in material and workmanship under normal use and service (except for those cases which buyer supplied materials are used) for a period of 12 months from the original date of shipment. During the warranty period, **VENTAIRE**, will at its option, repair, replace, or issue credit for any components that are deemed defective by **VENTAIRE**.

Buyer's failure to pay the full amount due within (60) days of invoice shall release seller from any and all liability or obligation to any warranty.

Before returning equipment for repair or replacement, a **Return Authorization Number** must be obtained from **VENTAIRE** (952-894-6637). The **Return Authorization Number** must be written on the outside of all shipping cartons. Items returned without a **Return Authorization Number** will be refused. Items returned should be in original condition in which it was received and must be accompanied with a written explanation of the reason(s) for their return.

This warranty does **not** cover damage caused by accident, misuse, misapplication, or unauthorized service modification.