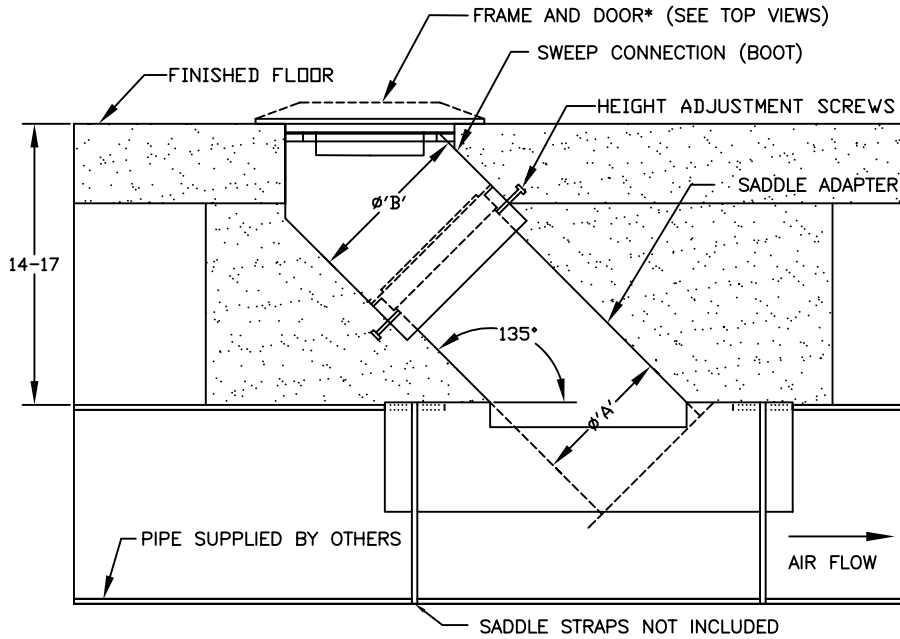
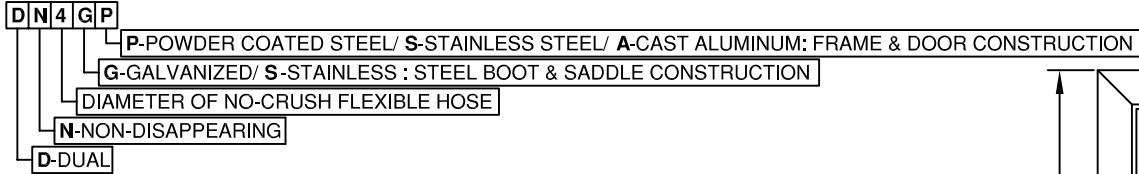


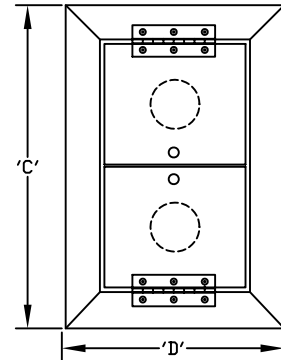
PROJECT:

| | | |
|------------|-------------|-----------------|
| LOCATION: | ENGINEER: | SALES ENGINEER: |
| ARCHITECT: | CONTRACTOR: | DATE: |

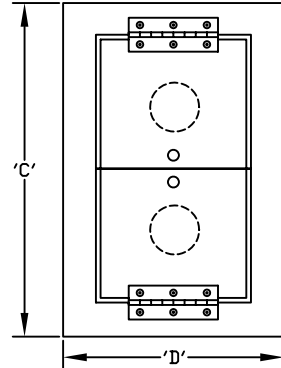
MODEL DESIGNATION



FRONT VIEW- ASSEMBLY



TOP VIEW - ALUMINUM FRAME & DOOR



TOP VIEW - STEEL FRAME & DOOR

| MODEL | HOSE DIA. | 'A' | 'B' | 'C' | 'D' | MIN PIPE DIA. |
|--|-----------|-----|------|-------|-------|---------------|
| DN3GP/ DN3GS/ DN3GA/ DN3SP/ DN3SS/ DN3SA | 3 | 6 | 8.5 | 17.75 | 12.00 | 12 |
| DN4GP/ DN4GS/ DN4GA/ DN4SP/ DN4SS/ DN4SA | 4 | 6 | 8.5 | 17.75 | 12.00 | 12 |
| DN5GP/ DN5GS/ DN5SP/ DN5SS | 5 | 8 | 10.5 | 25.25 | 15.00 | 14 |
| DN6GP/ DN6GS/ DN6SP/ DN6SS | 6 | 8 | 10.5 | 25.25 | 15.00 | 14 |

SCHEDULE

| ITEM | QTY | MODEL | REFERENCE |
|------|-----|-------|-----------|
| | | | |
| | | | |
| | | | |

NOTES:
 *ALUMINUM FRAME TAPERS TO A HEIGHT OF 3/4". STEEL FRAME IS FLAT.
 FLOOR PLATE & DOOR: 1/4" POWDER COATED STEEL, 304 STAINLESS STEEL OR CAST ALUMINUM
 HINGE: CONTINUOUS 304 STAINLESS STEEL.
 BOOT & SADDLE: 20 GAUGE GALVANIZED STEEL OR 304 STAINLESS STEEL.
 ALL DIMENSIONS ARE IN INCHES
 IT IS RECOMMENDED TO ENCASE THE ASSEMBLY IN CONCRETE BELOW GRADE.
 PITCH UNDERGROUND PIPE 1" FOR EVERY 40' IN THE DIRECTION OF AIR FLOW FOR PROPER DRAINING.