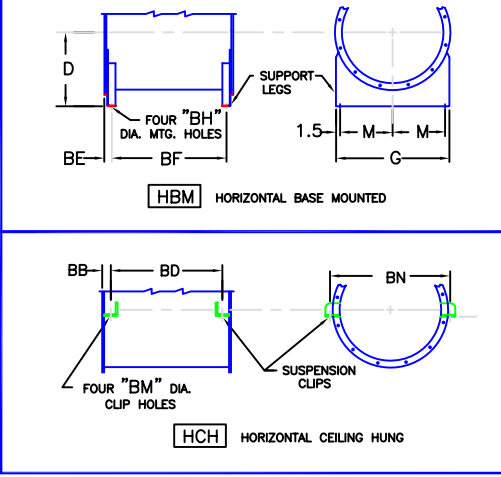
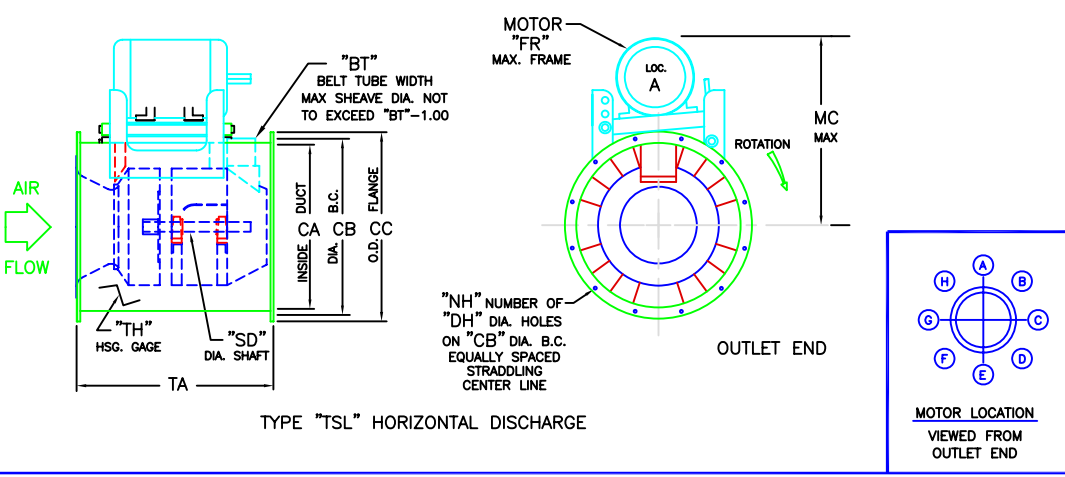


PROJECT: _____ LOCATION: _____ ARCHITECT: _____ ENGINEER: _____ CONTRACTOR: _____ SALES ENGINEER: _____ DRAWN DATE: _____ DRAWN BY: _____ REVISED DATE: _____



MODEL	SIZE	BB	BD	BE	BF	BH	BM	BN	BT	CA	CB	CC	D	DH	FR	G	M	MC	NH	SD CL I	SD CL II	SD CL III	TA	TH
TSL122	122	1.00	23.25	1.06	23.13	.44	.56	19.75	5.25	16.56	18.50	19.75	12.00	.56	184T	19.75	8.38	23.13	8	1.000	1.000		25.25	10
TSL150	150	1.00	27.75	1.06	27.63	.44	.56	23.50	6.50	20.25	22.13	23.38	14.00	.56	215T	23.38	10.19	25.73	8	1.000	1.187		29.75	10
TSL182	182	1.50	28.25	1.06	29.19	.44	.56	27.75	6.50	24.69	26.75	28.00	16.00	.69	256T	28.00	12.50	34.45	12	1.187	1.437	1.437	31.25	12
TSL200	200	1.50	31.50	1.06	32.44	.56	.56	30.13	7.25	27.06	29.13	30.31	18.00	.81	256T	30.31	13.66	36.20	12	1.437	1.437	1.437	34.50	12
TSL222	222	1.50	35.50	1.31	35.94	.56	.56	33.13	8.00	30.06	32.13	33.38	20.00	.81	286T	33.38	15.19	39.15	12	1.437	1.437	1.437	38.50	12
TSL245	245	1.50	40.75	1.31	41.19	.56	.81	36.25	8.93	33.13	35.13	36.38	21.00	.81	365T	36.38	16.69	43.61	12	1.437	1.937	1.937	43.75	12
TSL245	270	1.50	44.25	1.31	44.69	.56	.81	39.63	9.75	36.50	38.50	39.75	23.00	.81	365T	39.75	18.38	46.41	12	1.687	1.937	2.187	47.25	12
TSL300	300	1.50	49.50	1.31	49.88	.56	.81	43.75	10.93	40.56	43.13	44.88	25.00	.81	365T	44.88	20.94	49.38	16	1.937	2.187	2.437	52.50	10
TSL330	330	1.50	54.75	1.31	55.13	.56	.81	47.88	12.00	44.63	47.25	49.00	27.00	.81	365T	49.00	23.00	50.81	16	1.937	2.187	2.437	57.75	10
TSL365	365	2.00	60.25	1.56	61.13	.56	.81	52.56	13.25	49.38	52.00	53.75	29.00	.81	365T	53.75	25.38	53.75	16	1.937	2.437	2.437	64.25	10
TSL402	402	2.00	66.75	1.69	67.38	.81	.81	57.56	14.75	54.38	57.50	59.75	33.00	.81	405T	59.75	28.38	61.77	16	2.187	2.437	2.937	70.75	10
TSL445	445	2.00	74.63	1.69	75.25	.81	.81	63.38	16.25	60.19	63.25	65.50	36.00	.81	445T	65.50	31.25	66.72	16	2.437	2.687	3.437	78.63	10
TSL490	490	2.00	82.38	1.69	83.00	.81	.81	69.44	18.00	66.25	69.38	71.63	39.00	.81	445T	71.63	34.31	70.18	24	2.687	2.937	3.437	86.38	10
TSL542	542	2.00	91.63	2.44	90.75	.81	1.06	76.56	19.88	73.38	77.00	79.75	43.00	.81	445T	79.75	38.38	74.01	24	2.937	3.437	3.937	95.63	10
TSL600	600	2.50	100.63	2.44	100.75	.81	1.06	85.38	22.13	81.19	84.75	87.50	47.00	.81	445T	87.50	42.25	78.41	24	2.937	3.437	3.937	105.63	10
TSL660	660	2.50	111.38	2.44	111.50	1.06	1.06	93.56	24.25	89.31	92.88	95.63	52.00	.81	445T	95.63	46.31	82.77	24	3.437	3.937	3.937	116.38	10
TSL730	730	2.50	123.50	2.44	123.63	1.06	1.06	102.94	26.88	98.75	104.38	107.13	57.00	.81	445T	107.13	52.06	87.76	24	3.437	3.937	4.437	128.50	10
TSL807	807	2.56	137.00	2.44	137.25	1.06	1.06	115.50	29.50	109.25	114.63	117.63	62.00	.81	445T	117.63	57.31	93.25	24	3.937	4.437	4.937	142.13	7
TSL890	890	2.56	151.13	2.44	151.38	1.06	1.06	126.56	32.63	120.31	126.06	128.75	68.50	.81	445T	128.75	62.88	99.06	24	3.937	4.937	5.437	156.25	7

SCHEDULE

ITEM	QTY	MODEL	HP	CFM	S.P.	VOLTAGE	MOTOR LOCATION	DISCHARGE POSITION	REFERENCE

NOTES