



11975 Portland Ave. S. Suite 104  
Burnsville, MN 55337

Phone: 952-894-6637

Fax: 952-894-0750

Email: [info@ventaire.com](mailto:info@ventaire.com)

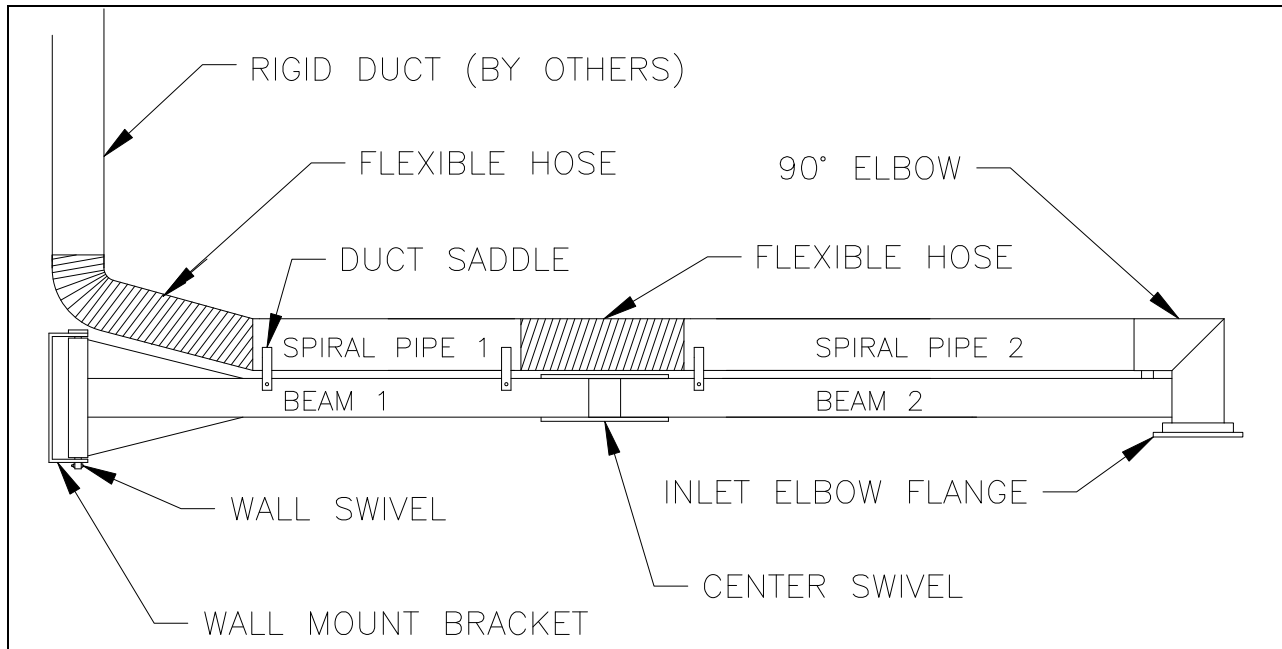
Website: [www.ventaire.com](http://www.ventaire.com)

**PRODUCT GUIDE FOR**

**Model EXB -**

**Extension Booms**

**With Fume Extraction Arm**



**FIG 1 – Extension Boom Assembly**

### **INTRODUCTION**

1. Prior to installation inspect all the components received for shipping damage. If damage occurred contact your Ventaire representative for assistance.
2. Read **ALL** the instructions before proceeding with any installation, operation, or maintenance.

*NOTE: This manual does not include information on the fume arm being mounted to the boom. A separate product guide is included for the arm itself.*

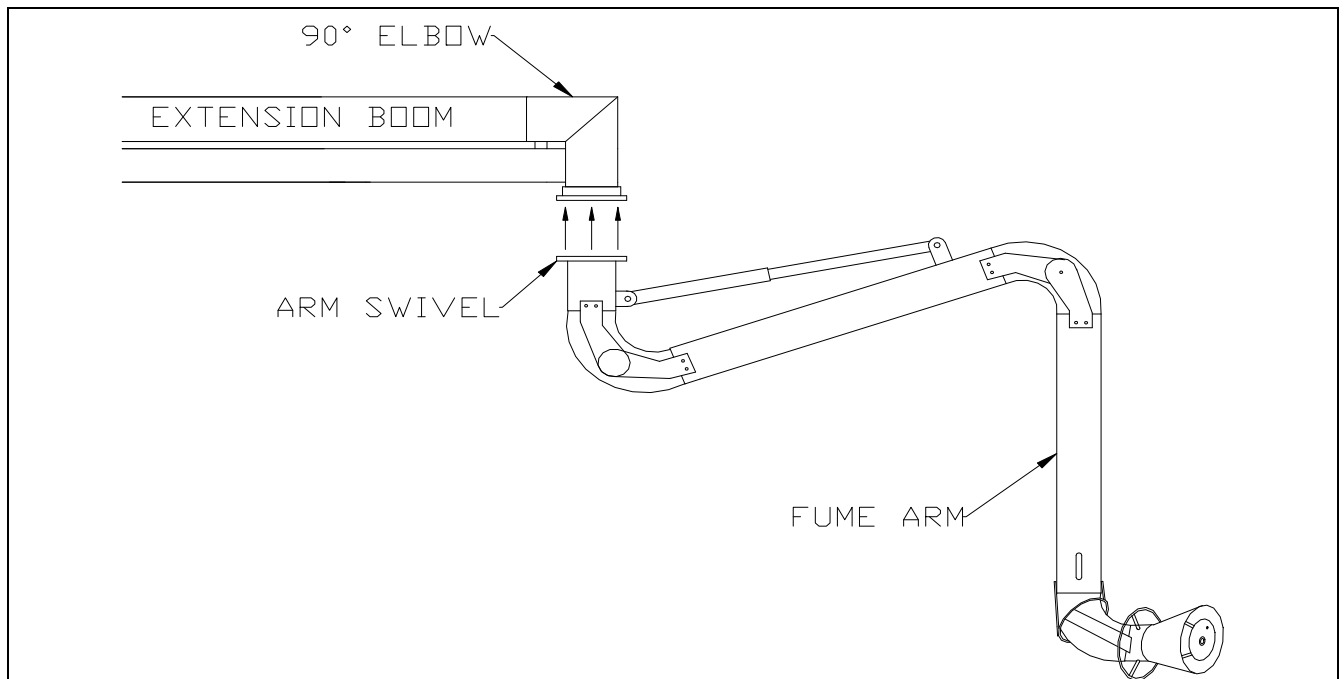
### **BOOM INSTALLATION**

1. The extension boom should be mounted in a location so that the rigid duct can be installed as shown in FIG 1. Determine the height of the wall bracket so that the boom will not interfere with any other systems or come in contact with any equipment that can damage the system or effect performance. The rigid duct running to the boom should be at least a foot from the top of the wall bracket.
2. Level and secure the wall bracket to the desired rigid support. Mounting methods differ with the desired mounting surface. 1/2" bolts are recommended if mounting to wall or beam. The wall bracket can also be welded for added support once leveled.

*NOTE: To insure proper functioning of the boom, the wall bracket must be mounted completely level.*

3. Lift and position beam 1 so that the longer pivot bolt (threaded on both ends) can slide through the wall bracket holes and the round tube on beam 1. Test movement of the beam to make sure the pivot bolt torque is correct. The boom should not be able to move up or down when pressure is applied vertically and should also pivot freely horizontally.
4. Lift the second beam up to the center swivel on beam 1 and position it so the smaller swivel bolt can be fastened using the provided washers and nuts. Again, test the movement of the beam to make sure the torque is correct.
5. Attach spiral pipe to the steel boom (as shown in FIG 1) using the provided duct saddles making sure the spiral pipe is tight to the saddle before fastening.
6. Attach flexible hose to the rigid duct and spiral duct using the provided hose clamps. Shorten the flexible hose to the minimum length allowed for free movement. For additional security, rivet the flexible hose to the rigid duct and spiral duct through the hose clamps.

*NOTE: Use the larger section of the flexible hose to connect the vertical rigid ductwork to the boom (trimming may be necessary) and the shorter length at the center swivel of the boom as pictured in FIG 1.*



**FIG 2 – Extension boom with SIFA fume arm**

## **FUME ARM INSTALLATION**

1. Refer to the specific product guide for assembly of the fume arm.
2. After the fume arm is fully assembled, attach the arm swivel to the bottom of the flanged boom elbow as shown in FIG 2 using the provided hardware.
3. Adjust the fume arm according to the separate product guide.

## **OPERATION**

1. Position the extension boom to allow the fume arm on the end of the boom to get as close to the fume source as possible without interfering with the work.
2. Position the inlet hood at an appropriate location.

*NOTE: Position hood as close to the source as possible without obstructing vision of the work area.*

3. Open or close any applicable air shut-off devices (i.e. blast gate, quadrant damper, etc.)
4. Turn on the exhaust fan.
5. After completing the welding process and fumes are no longer being produced, turn off the exhaust fan.
6. Open or close any applicable air shut-off devices (i.e. blast gate, quadrant damper, etc.)
7. Retract the fume arm, position the extension boom and arm safely out of the work area.

## **EXTENSION BOOM MAINTENANCE**

1. Inspect pivot points and wall mount fasteners for any unusual wear. Replace or tighten as necessary.
2. Routinely check the flexible hose and spiral duct connections for excessive wear to ensure proper airflow. Replace if necessary.
3. Inspect the airflow path through the extension boom and fume arm to ensure the airflow path is free from any obstructions.
4. For problems not covered in these situations contact your Ventaire representative.

## **FUME ARM MAINTENANCE**

1. Refer to the separate product guide for specific fume arm.



Phone: (952) 894-6637

Fax: (952) 894-0750

Email: [info@ventaire.com](mailto:info@ventaire.com)

## 12-MONTH WARRANTY

---

**VENTAIRE** warrants their products, to the original purchaser, to be free from defects in material and workmanship under normal use and service (except for those cases which buyer supplied materials are used) for a period of 12 months from the original date of shipment. During the warranty period, **VENTAIRE**, will at its option, repair, replace, or issue credit for any components that are deemed defective by **VENTAIRE**.

Buyer's failure to pay the full amount due within (60) days of invoice shall release seller from any and all liability or obligation to any warranty.

Before returning equipment for repair or replacement, a **Return Authorization Number** must be obtained from **VENTAIRE** (952-894-6637). The **Return Authorization Number** must be written on the outside of all shipping cartons. Items returned without a **Return Authorization Number** will be refused. Items returned should be in original condition in which it was received and must be accompanied with a written explanation of the reason(s) for their return.

This warranty does **not** cover damage caused by accident, misuse, misapplication, or unauthorized service modification.