

PROJECT:

LOCATION:

ENGINEER:

SALES ENGINEER:

ARCHITECT:

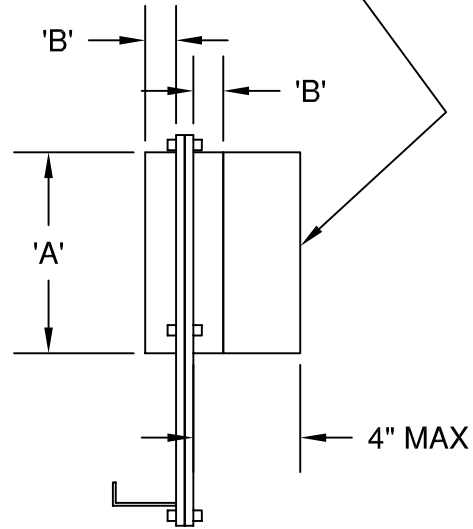
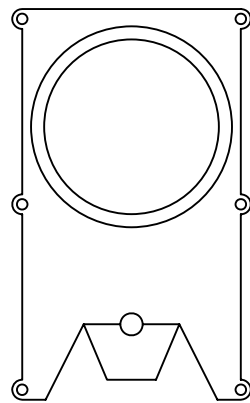
CONTRACTOR:

DATE:

BLAST GATE SLEEVE (OPTIONAL)

BGSB (GALVANIZED)

BGSS (STAINLESS STEEL)



MODEL	'A'	'B'	MODEL	'A'	'B'
BG20	2	.75	BG100	10	1.88
BG30	3	1.13	BG120	12	2.00
BG40	4	1.25	BG140	14	2.13
BG50	5	1.38	BG160	16	2.25
BG60	6	1.38	BG180	18	3.50
BG70	7	1.50	BG200	20	3.63
BG80	8	1.75	BG220	22	3.00
BG90	9	1.88	BG240	24	3.00

SCHEDULE

ITEM	QTY	MODEL	REFERENCE

NOTES:

ALL DIMENSIONS IN INCHES.

BLAST GATE - 3/16 THICK #316 CAST ALUMINUM BODY HALVES & 18 GAUGE GALVANIZED STEEL BLADE (STANDARD).

OPTIONAL CONSTRUCTION: 304 STAINLESS STEEL BLADE, COMPLETE STAINLESS STEEL CONSTRUCTION, ELECTRICAL OR PNEUMATIC OPERATORS, SELF CLEANING, AIRTIGHT CONSTRUCTION.

WHEN MOUNTING FLEXIBLE HOSE DIRECTLY TO BLAST GATE, EXTENSION SLEEVES ARE REQUIRED.