

PROJECT:

LOCATION:

ENGINEER:

SALES ENGINEER:

ARCHITECT:

CONTRACTOR:

DATE:

MODEL DESIGNATION

DS4GP

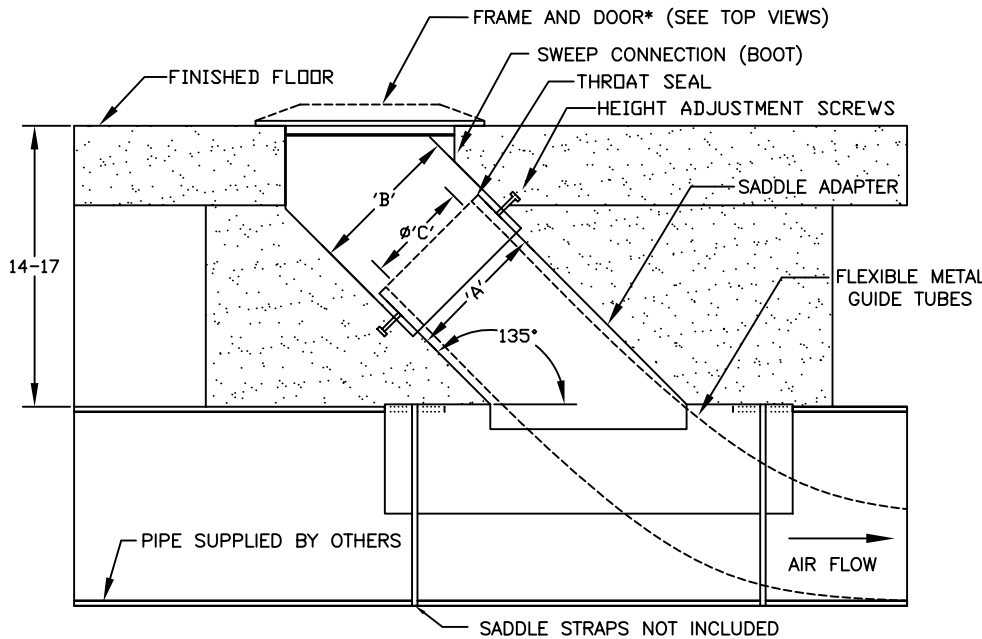
P-POWDER COATED STEEL/ S-STAINLESS STEEL/ A-CAST ALUMINUM: FRAME & DOOR CONSTRUCTION

G-GALVANIZED/ S-STAINLESS : STEEL BOOT & SADDLE CONSTRUCTION

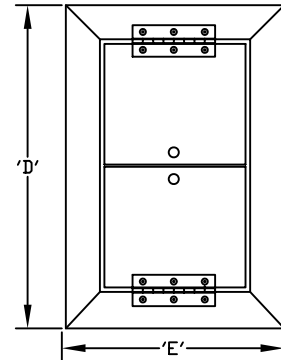
DIAMETER OF NO-CRUSH FLEXIBLE HOSE

S-SELF STORING

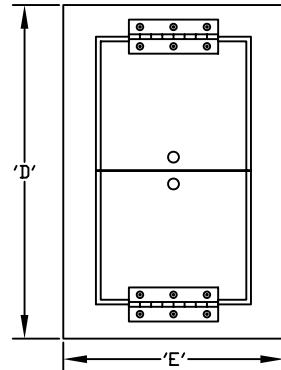
D-DUAL



FRONT VIEW- ASSEMBLY



TOP VIEW - ALUMINUM FRAME & DOOR



TOP VIEW - STEEL FRAME & DOOR

MODEL	HOSE DIA.	'A'	'B'	'C'	'D'	'E'	MIN PIPE DIA.
DS3GP/ DS3GS/ DS3GA/ DS3SP/ DS3SS/ DS3SA	3	6	8.5	4	17.75	12.00	12
DS4GP/ DS4GS/ DS4GA/ DS4SP/ DS4SS/ DS4SA	4	6	8.5	5	17.75	12.00	14
DS5GP/ DS5GS/ DS5SP/ DS5SS	5	8	10.5	6	25.25	15.00	16
DS6GP/ DS6GS/ DS6SP/ DS6SS	6	8	10.5	7	25.25	15.00	18

SCHEDULE

ITEM	QTY	MODEL	REFERENCE

NOTES:

- *ALUMINUM FRAME TAPERS TO A HEIGHT OF 3/4". STEEL FRAME IS FLAT.
- FLOOR PLATE & DOOR: 1/4" POWDER COATED STEEL, 304 STAINLESS STEEL OR CAST ALUMINUM
- HINGE: CONTINUOUS 304 STAINLESS STEEL.
- BOOT & SADDLE: 20 GAUGE GALVANIZED STEEL OR 304 STAINLESS STEEL.
- ALL DIMENSIONS ARE IN INCHES
- IT IS RECOMMENDED TO ENCASE THE ASSEMBLY IN CONCRETE BELOW GRADE.
- PITCH UNDERGROUND PIPE 1" FOR EVERY 40' IN THE DIRECTION OF AIR FLOW FOR PROPER DRAINING.
- FLEXIBLE METAL GUIDE TUBES: .012" INTERLOCKED GALVANIZED OR STEEL TO MATCH BOOT AND SADDLE MATERIAL.