

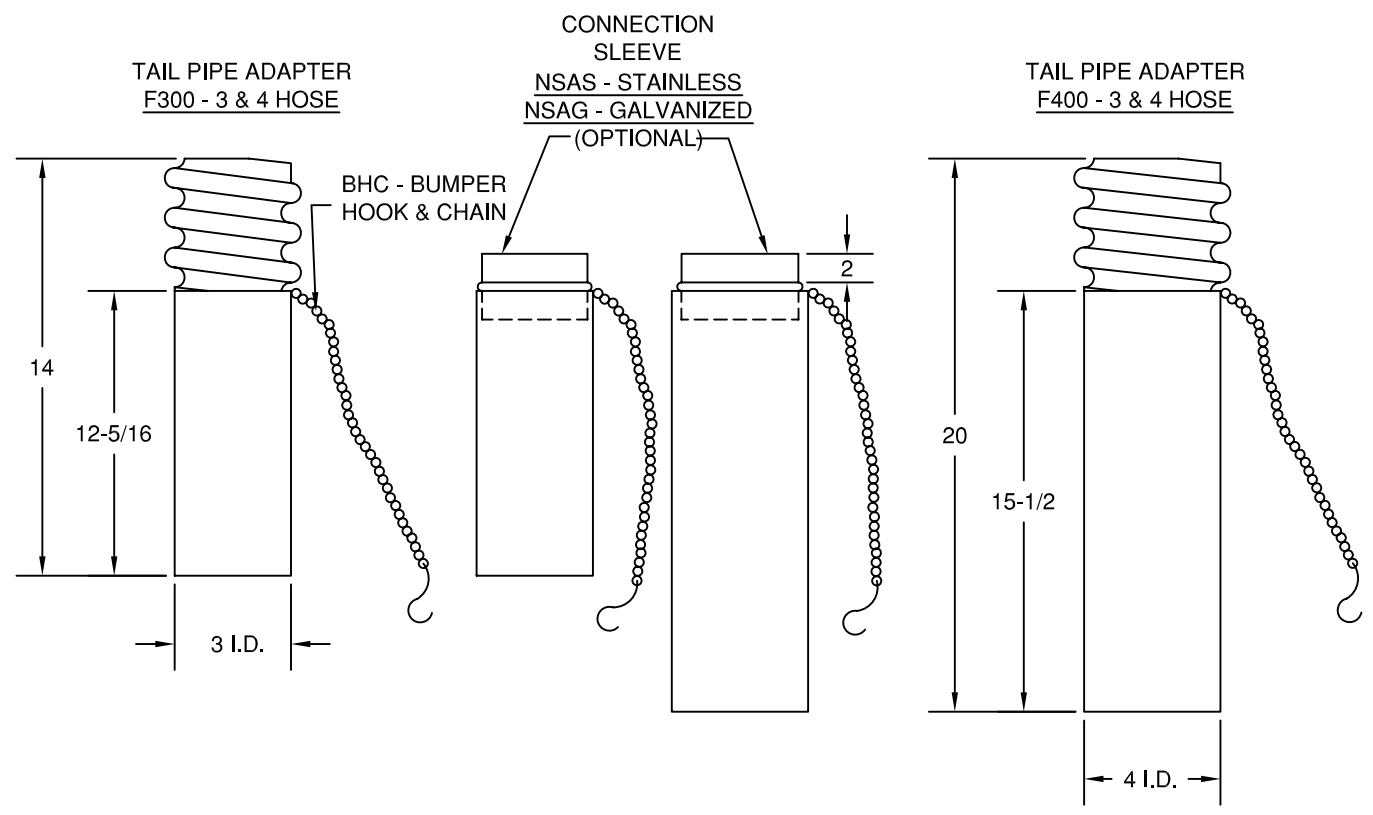


SUBMITTAL

**NO CRUSH/RUBBER
STRAIGHT
TAILPIPE ADAPTERS**

PROJECT:

LOCATION:	ENGINEER:	SALES ENGINEER:
ARCHITECT:	CONTRACTOR:	DATE:



SCHEDULE

ITEM	QTY	MODEL	REFERENCE

NOTES:
 ALL DIMENSIONS IN INCHES AND NOMINAL.
 CONSTRUCTION: SPECIAL FORMULATED RUBBER COMPOUND DESIGNED TO WITHSTAND EXHAUST TEMPERATURES UP TO 600° F.
 HOSE DIAMETERS ARE FOR MODEL N1 HOSE. OTHER HOSES REQUIRE THE THREADS BE REMOVED AND A CONNECTION SLEEVE INSTALLED.
 OPTIONAL CONNECTION SLEEVES CONSTRUCTED OF 20 GA. GALV. OR STAINLESS STEEL