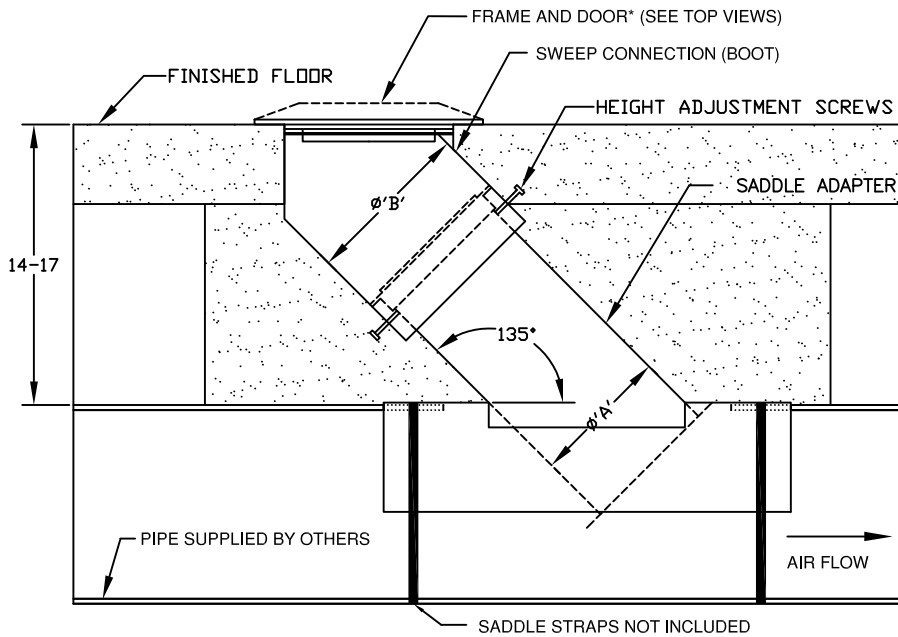


PROJECT:

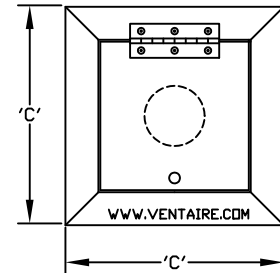
LOCATION:	ENGINEER:	SALES ENGINEER:
ARCHITECT:	CONTRACTOR:	DATE:

**MODEL DESIGNATION**

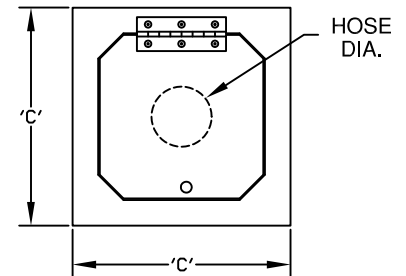
<b>S</b>	<b>N</b>	<b>4</b>	<b>G</b>	<b>P</b>
P-POWDER COATED STEEL/ S-STAINLESS STEEL/ A-CAST ALUMINUM; FRAME & DOOR CONSTRUCTION				
G-GALVANIZED/ S-STAINLESS : STEEL BOOT & SADDLE CONSTRUCTION				
DIAMETER OF NO-CRUSH FLEXIBLE HOSE				
N-NON-DISAPPEARING				
S-SINGLE				



FRONT VIEW- ASSEMBLY



TOP VIEW - ALUMINUM FRAME & DOOR



TOP VIEW - STEEL FRAME & DOOR

MODEL	HOSE DIA.	'A'	'B'	'C'	MIN PIPE DIA.
SN3GP/ SN3GS/ SN3GA/ SN3SP/ SN3SS/ SN3SA	3	6	8.5	11.75	8
SN4GP/ SN4GS/ SN4GA/ SN4SP/ SN4SS/ SN4SA	4	6	8.5	11.75	8
SN5GP/ SN5GS/ SN5GA/ SN5SP/ SN5SS/ SN5SA	5	8	8.5	11.75	8
SN6GP/ SN6GS/ SN6GA/ SN6SP/ SN6SS/ SN6SA	6	8	8.5	11.75	8

## SCHEDULE

ITEM	QTY	MODEL	REFERENCE

**NOTES:**

- \*ALUMINUM FRAME TAPERS TO A HEIGHT OF 3/4". STEEL FRAME IS FLAT.
- FLOOR PLATE & DOOR: 1/4" POWDER COATED STEEL, 304 STAINLESS STEEL OR CAST ALUMINUM
- HINGE: CONTINUOUS 304 STAINLESS STEEL.
- BOOT & SADDLE: 20 GAUGE GALVANIZED STEEL OR 304 STAINLESS STEEL.
- ALL DIMENSIONS ARE IN INCHES
- IT IS RECOMMENDED TO ENCASE THE ASSEMBLY IN CONCRETE BELOW GRADE.
- PITCH UNDERGROUND PIPE 1" FOR EVERY 40' IN THE DIRECTION OF AIR FLOW FOR PROPER DRAINING.