

PROJECT:

LOCATION:

ENGINEER:

SALES ENGINEER:

ARCHITECT:

CONTRACTOR:

DATE:

MODEL DESIGNATION

S S 4 G P

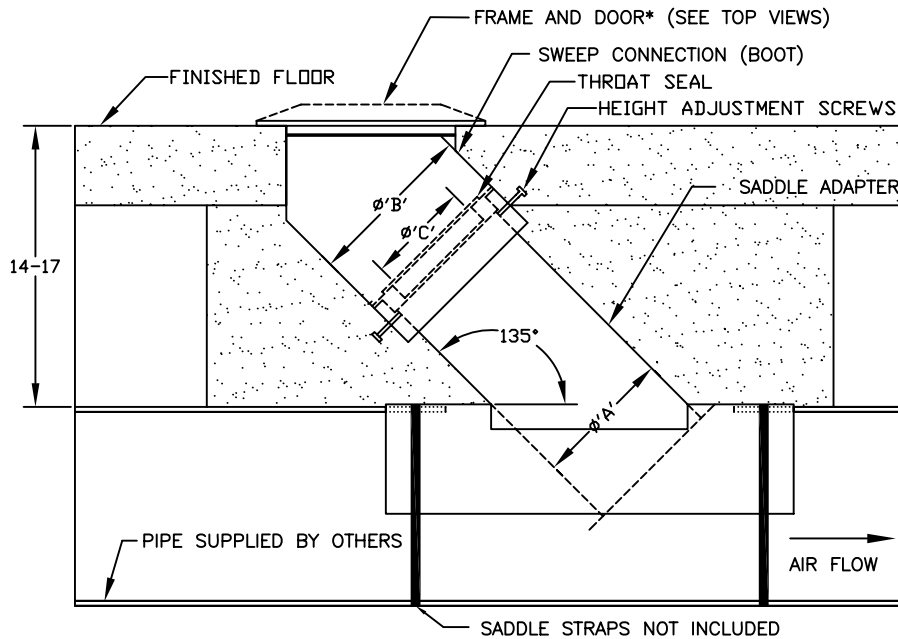
P-POWDER COATED STEEL/ **S**-STAINLESS STEEL/ **A**-CAST ALUMINUM; FRAME & DOOR CONSTRUCTION

G-GALVANIZED/ **S**-STAINLESS : STEEL BOOT & SADDLE CONSTRUCTION

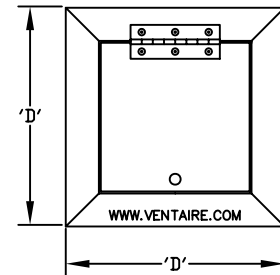
4-DIAMETER OF NO-CRUSH FLEXIBLE HOSE

S-SELF STORING

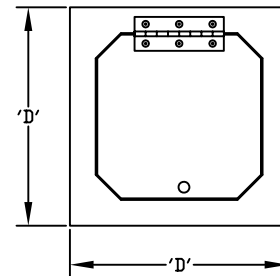
S-SINGLE



FRONT VIEW- ASSEMBLY



TOP VIEW - ALUMINUM FRAME & DOOR



TOP VIEW - STEEL FRAME & DOOR

| MODEL | HOSE DIA. | 'A' | 'B' | 'C' | 'D' | MIN PIPE DIA. |
|--|-----------|-----|------|-----|-------|---------------|
| SS3GP/ SS3GS/ SS3GA/ SS3SP/ SS3SS/ SS3SA | 3 | 6 | 8.5 | 4 | 11.75 | 8 |
| SS4GP/ SS4GS/ SS4GA/ SS4SP/ SS4SS/ SS4SA | 4 | 6 | 8.5 | 5 | 11.75 | 8 |
| SS5GP/ SS5GS/ SS5SP/ SS5SS | 5 | 8 | 10.5 | 6 | 15.00 | 10 |
| SS6GP/ SS6GS/ SS6SP/ SS6SS | 6 | 8 | 10.5 | 7 | 15.00 | 10 |

SCHEDULE

| ITEM | QTY | MODEL | REFERENCE |
|------|-----|-------|-----------|
| | | | |
| | | | |
| | | | |

NOTES:

- *ALUMINUM FRAME TAPERS TO A HEIGHT OF 3/4". STEEL FRAME IS FLAT.
- FLOOR PLATE & DOOR: 1/4" POWDER COATED STEEL, 304 STAINLESS STEEL OR CAST ALUMINUM
- HINGE: CONTINUOUS 304 STAINLESS STEEL.
- BOOT & SADDLE: 20 GAUGE GALVANIZED STEEL OR 304 STAINLESS STEEL.
- ALL DIMENSIONS ARE IN INCHES
- IT IS RECOMMENDED TO ENCASE THE ASSEMBLY IN CONCRETE BELOW GRADE.
- PITCH UNDERGROUND PIPE 1" FOR EVERY 40' IN THE DIRECTION OF AIR FLOW FOR PROPER DRAINING.